

TMMEC NEWSLETTER

NOVEMBER 2021



Located at the Memorial Park, Tauranga

Open to the public Sundays 10:00 to 15:00
(weather and Covid Level permitting)

CONTACT:

The Secretary, PO Box 15589., Tauranga, 3112

Palmerville Station: Phone: 07 578 7293

WEBSITE: www.tmmec.org.nz

FACEBOOK:

<https://www.facebook.com/memorialparkrailway/>

COMMITTEE:

President: Jason Flannery 07 572 1165

Vice: Bruce McKerras 07 577 0134

Secretary: Warren Belk

Treasurer: Joanne Knights

Club Captain: Max Donnelly 07 571 6778

Committee: Ash Thomas Warren Karlsson
Russell Prout Regan Olivecrona
Bruce Harvey

Boiler Committee: Peter Jones

Bruce McKerras

Safety Committee: Warren Karlsson

Peter Jones Jason Flannery

Editor: Chris Pattison 021 231 6612

Ytrose2@gmail.com

CONVENORS:

Workshop: John Nicol Brian Marriner

Track: Bruce Harvey John Stent

Russell Prout

Librarian: Chris Pattison

Rolling Stock: Bruce Harvey

Website: Max Donnelly Murray de Lues

MEANZ Rep.: Peter Jones

President's Report – November

Hi TMMEC

Things are still quiet around the clubrooms whilst we wait for the country to have some direction forward in how we interact with the public, vaccines, and traffic lights. It seems that level one as we knew it is over for now, be it short or long term, who knows. When the traffic light system is finally implemented, may I suggest all interested club members have a meeting to discuss the new system, what it means to them, and how we move forward to do what is best for our club members and club activities.

Well, we had good intentions to have a playdate and BBQ in place of our annual open weekend. But just a Saturday event was not meant to be. With persistent rain, forecast to continue for the entire day, it was decided best to cancel. Limited space in the club rooms would have been prohibitive to numbers, together with the spacing requirements. Several members turned up in the morning, enjoyed coffee / tea, and some scones thanks to Murray. Most filtered away before mid-day.

There are several outstanding models currently being built, another year of shed time and I expect we should have some fantastic models competing for the Norm Decke trophy in 2022.

I expect we will still get in some playdates in the next few weeks so keep an eye out for any email updates. If you are keen to get on the track then please speak to Bruce McKerras or myself, we will get things opened up so that you can have a go. You do not have to wait for a playdate to be announced for the opportunity to use the track. The track is there 7 days a week if you have enough people to safely open up.

The date for the TMMEC Christmas party has been set for the 12/2/22 so please pencil this in.

Jason

Editorial

Dear Ferroequinologists,

I found out something interesting recently. Apparently, we in NZ are facing an Acetylene shortage. It appears that all our Acetylene gas is sourced offshore and that presently there is a bottleneck in supply. So, if you are thinking of getting a full tank of gas, do not delay. Petrol is getting bad price wise, but at least it is still available.

Editor (Cotter Pin)

CLUB MEMBER PROJECTS

Many people who are involved with steam say that a locomotive, at least the boiler, has a special life to it. It is not an easy process building and creating a boiler, especially one that finally gives life to a locomotive, be it on rail, or road. There are a number of somewhat difficult hurdles to surpass (understandably due to the risks of possible failure).

So, we need to congratulate Owen on a new "baby". Just recently, the boiler that he has built, has been certified, and is now a new addition to our steam fraternity.



Proud father Owen with baby in swaddling clothes.



Boiler baby all tucked up nicely.



The boiler “baby”.



Proud father toasting the new baby

FAVOURIED SUPPLIERS & RECOMMENDATIONS

Recommendations are welcome.

I can personally say that Pipeline Hose & Engineering Supplies in Newton Street have been good to me and if you mention that you are a member of TMMEC, you will receive a discount for what you buy.

LIBRARY CORNER

I am still on the lookout for missing issues of Model Engineer. If you have ME magazines lying around gathering dust, or know of somebody who has and wants to rid themselves of them, we can provide a good home.

SMALLS – FOR SALE/ WANTED:

Any members wanting to sell, or purchase workshop items?



SUGGESTIONS AND IDEAS:

Any clever workarounds that you have come up with? Please share.

CLUB NEWS:

CANMOD 2022

Kindly note that, due to uncertainties with regard to Covid restrictions, CANMOD has been postponed until 2023.



ITEMS OF INTEREST:

Ever heard of a Sherman Bowtie or a “Snakehead”?

SHERMAN BOWTIE



Yes, during the Civil War this was done by Sherman’s men, and to some extent the Confederates.

In those days, rails were not as they are now. They used a great deal less steel and were nowhere near as heavy. Locomotives like “The General” used during the war weighed 22 tons compared to a typical

locomotive today that weighs 700 tons. The rails could be lighter, but they still deformed over time.



It was a much easier thing in those days to pull up the sleepers, make a big fire, insert the ripped-up rails until they got soft and then wrap them around a tree or some such.

In this way, when the enemy returned, they would not be able to simply put the rail back down and so restore the rail connection.

Even then, one of the big problems, especially in the South where rail quality suffered greatly even before the war, were “snakeheads”. This was where, over time, the weight of the locomotive would deform the track until one end curled up (like a striking snake), cut through the floor of the cars and cause derailments and death. Snakeheads were one of the most feared accident events on train trips. By the turn of the century, 50,000 people would be killed and wounded annually on trains and the New York Times coined the word “deathtraps” to describe them.

The South only had one large steel mill, the Tredegar Iron Works



But the big problem was they could never get enough ore or coal to keep the mill running and about half the time it was idle for want of raw materials. In addition, the stuff they did make was of extreme sub-standard quality. Tredegar cannons were known to explode during use, killing the crew and everyone nearby. The upshot was that the Confederates couldn't easily repair their own rail when it was destroyed by Sherman.

When the rails were turned into knots, it was called “Sherman’s neckties” or “Sherman’s bowties”.

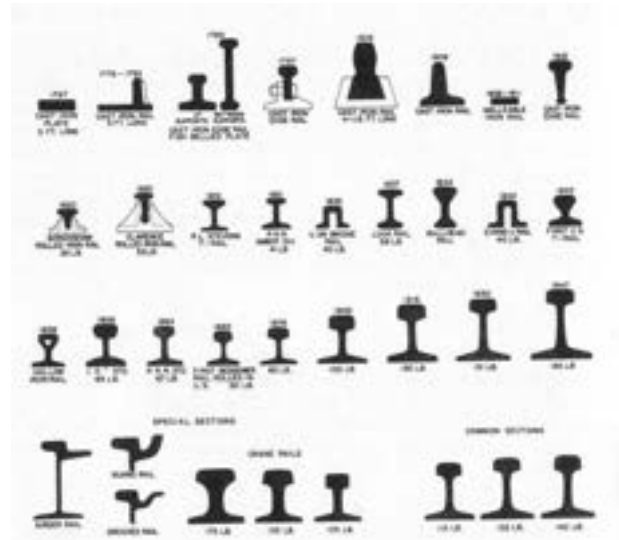


FIGURE 6. Sketches of cross-sections of rail from the earliest periods of railroading until the present, showing the evolution of the modern railroad rail design.



Tuesday Evening Meeting (10th)

Last Tuesday we had a couple of presentations.

Firstly, Owen proudly brought along his new boiler for all to see. The soldering looked really neat and tidy. We now look forward to seeing it working in anger.





Then Russell had on display the con-rods that he had been machining. The reason for this was that he bemoaned the fact that he was machining along the edge of one con-rod with a carbide tool (expensive) which suddenly let go on him. There was no obvious reason for this to happen. Carbide is known to be a brittle material, and I wonder if a bit of swarf might have got trapped and overloaded the cutter. Anybody's guess I suppose.



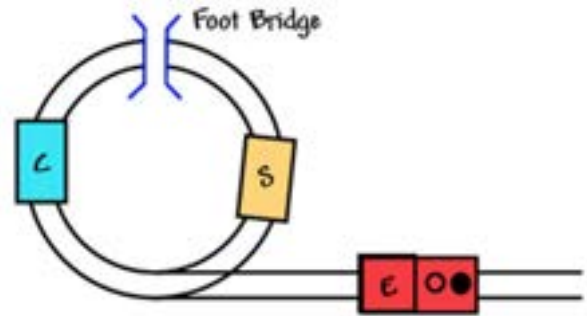
PUZZLE

Just to keep you on your toes, I am including a rail based shunting puzzle here. I leave it with you to puzzle out, and the solution will be posted in the next magazine edition. Sorry, no prizes for getting it right.

There is a circular railway siding at the end of the main line.

C is a cattle truck,
S is a sheep truck,
E is an engine.

The engine can pass under the Foot Bridge but the two trucks cannot because they are too tall. The problem is to shunt the trucks so that the Cattle truck and the Sheep truck change places and the Engine is back on the main line.



The Worst Averted.

The superintendent of a railroad had issued strict orders instructing stationmasters along the line to report all accidents or near-accidents immediately. The next day he received the following telegram:

“Man fell off platform in front of engine. Will wire details later.”

Five minutes later the details came over the wire.

“Everything O.K. Nobody hurt. Engine was going backward.”



And where did all this extra rail come from?

OPERATORS ROSTER 2021

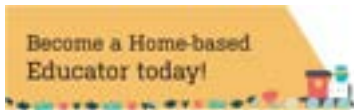
14/11/2021 21/11/2021 28/11/2021
 B. MCKERRAS R.PROUT M. de LUES

05/12/2021 12/12/2021
 B.FITZPATRICK J.FLANNERY

19/12/2021 26/12/2021
 B.HARVEY Boxing day

SPONSORS:

Our thanks to those companies who sponsor us –



LINKS TO OTHER CLUBS:

MEANZ has a listing of affiliated clubs on its website. It is in the form of a map showing the various locations of each club. If you click on a location, it will give you details of that club. See: <http://www.pnmeec.org.nz/meanzmap.htm>

Auckland Society of Model Engineers - www.asme.org.nz Cambridge Model Engineering Society Inc.

www.cmes.org.nz/

Christchurch Live Steamers -

www.clstrains.co.nz

Canterbury Society of Model Engineers -

www.csmee.org.nz

Hamilton Model Engineers

- www.hme.co.nz

Hutt Valley Model Engineering Society -

www.hvmes.com

Kapiti Miniature Railway Association -

www.kapitirail.org

Havelock North Live Steamers -

www.keirungaparkrailway.org.nz

Manakau Live Steamers -

www.manakaulivesteamers.co.nz

Marlborough Associated Modellers Society -

www.mams.org.nz

Nelson Modellers - www.nelsonmodellers.org.nz

Otago Miniature Road and Rail Society -

www.omrr.org.nz

Otago Model Engineers Society -

www.omes.org.nz

Palmerston North Model Engineering Club -

www.pnmeec.org.nz

EBOP Society of Model Engineers, Whakatane

- www.riveredgerailway.org.nz

South Canterbury Model Engineers Society -

www.south-canterbury-model-engineers.org

Whangarei Model Engineering Club -

www.wmec.org.nz

MEANZ: - www.meanz.org/ meanz.org/

If I have missed any out, kindly advise me of whom and their details.



Use a sharp pencil.



Somebody was at cross purposes

**Tauranga Model Marine & Engineering Club
2021-2022**

Committee Members

President: Jason Flannery
Vice President: Bruce McKerras
Treasurer: Joanne Knights
Club Captain: Max Donnelly
Secretary: Warren Belk

Bruce Harvey
Warren Karlsson
Regan Olivecrona
Russell Prout
Ash Thomas

ADR Paperwork – every two years

Warren Karlsson – paperwork and audit
Exp 22 Sep 2022, Audit date 14/21 June 2022

Advertising

Jason Flannery
Joanne Knights

Boiler Inspectors

Peter Jones
Bruce McKerras

Bookkeeper:

Raewyn Tanner

Club Calendar:

Max Donnelly

Driver License Database:

Warren Karlsson

Driver License issuing

Jason Flannery, Expiry 31/8/21

Duty Operators:

Peter Jones

Front door entry codes:

Warren Karlsson

Librarian:

Chris Pattison

Locomotive WOF register – club locos

Bruce Harvey

Locomotive WOF – members locomotives

Bruce Harvey

WOF require two members to sign off, Bruce Harvey will arrange for an extra person when required.

MEANZ Rep:

Peter Jones

Member Register

Jason Flannery

Newsletter Editor:

Chris Pattison
Subs notice May edition

PO Box:

Jason Flannery

Ride car WOF register – club and members

Bruce Harvey

Safety Committee

- First aid and Fire extinguishers

Jason Flannery
Peter Jones
Warren Karlsson

- Ext test dates

Tauranga City Council Park Managers

Phill Everett 027 836 2707

Tauranga City Council Lease Manager

Conor McEvoy

Test Master Gauges – yearly, Exp 31/07/2021

Peter Jones

Track Managers:

Bruce Harvey
John Stent
Russell Prout
Max Donnelly – Raised track

Ticket Seller Roster: Jason Flannery

Website Editor:

Max Donnelly

Workshop:

John Nicol
Brian Marriner



TMMEC 2021 CALENDAR

	M	T	W	T	F	S	S	M	T	W	T	F	S	S	M	T	W	T	F	S	S	M	T
JAN																							
FEB																							
MAR																							
APR																							
MAY																							
JUNE																							
JULY																							
AUG																							
SEP																							
OCT																							
NOV																							
DEC																							

- SUNDAY RUNNING DAY - 10am to 3pm
- OFFICIAL CLUB PLAYDAY
- COMMITTEE MEETING - 7pm START
- GENERAL MEETING - 7pm START
- ENGINEERING TUESDAY - 7:30pm START
- OPEN WEEKEND
- CANCELLED
- AGM
- CHR CHRISTMAS PARTY - 13 FEB
- 20-21 MARCH HAMILTON OPEN WEEKEND
- 29-30-31 MAY MAUWAU OPEN WEEKEND
- 17-18 JULY EBOP OPEN WEEKEND
- 30 OCT HALLOWEEN NIGHT RUN
- 11th APRIL KATIKATI VINTAGE MACHINERY CLUB SHOW
- 3rd JULY NIGHT RUN